

Welcome!

Welcome to Seattle Sailing Club – the fun place to learn and sail since 1968. We believe that each member contributes to the success and growth of the sailing club and we hope you take pride in being a member of our Club.

OBJECTIVE

The purpose of this handbook is to describe the expectations of our members and to outline the policies, programs, and benefits available to our members. Members are responsible for reading the contents of this handbook in entirety, for it will answer questions about membership policies at Seattle Sailing Club as well as outline the services we provide. We hope your experience here is fun and rewarding!

Please note: this Member Handbook is an extension of the Member Contract and contains important information about Club policies. As a member of Seattle Sailing Club, we ask that you read this document carefully. Please contact the Club Manager if you have any questions not answered here.

➤ _____
(initial)

COVID-19 POLICIES

As a community, with group activities, we expect our members and their guests to follow all the current local, state, and federal guidelines regarding COVID-19. Along with their guidelines, the Club also asks members to:

- Send your COVID-19 vaccination record to the Club. This is required for participation in ALL Club activities including: lessons, clinics, group sails, race programs, etc.
- Stay home when you are sick.
- Wear a mask inside the lobby/classrooms/inside boats.
- Stay 6 ft apart.

PARKING

For day sailing, members can park in the south or north lots or on the street. If parking in a lot, do not park in permit required spots.

For overnight sails, park in a permit-free spot in one of the lots. There is no time limit to parking in permit-free parking spots.

MEMBERSHIP ONBOARDING

- ❖ Pay your set-up fee and complete your

12-month Membership Contract.

- ❖ Set-up your Club Manager account once you've received an onboarding email. Review the [New Member Club Manager Orientation](#) to help orient yourself to the program.
- ❖ If you'd like to join our Facebook members-only Seattle Sailing Club Community Lounge or Women's Room please 'friend' SSC Crew and we'll send an invitation. Facebook no longer allows private groups to invite people directly.
- ❖ Visit our [Member Resource Page](#) (pw: ssc2016!).
- ❖ Purchase Required Equipment and Recommended Equipment before your first sail.

REQUIRED EQUIPMENT

- ❖ [Washington State Boater Education Card](#)
- ❖ **Life Jacket/s for you and your crew.** West Marine has 4 packs of PFDs which are stored in a bag and easy to carry along.
- ❖ **VHF Radio**
- ❖ **Navigational Charts** and/or app such as [Navionics](#)
- ❖ **Tide Table Almanac and/or app** such as [Tides Near Me](#)
- ❖ **Phone/Tablet** to submit Usage Reports

RECOMMENDED EQUIPMENT

- ❖ [Boat US Towing Membership](#) (Highly Recommended, Required to charter in the SJs)
- ❖ Foul weather gear for you and crew
- ❖ Sun protection
- ❖ Cruising guides
- ❖ Navigational tools, binoculars, GPS, multi-tool, knife, and flashlight.
- ❖ Logbook

➤ _____
(initial)

MEMBERSHIP CONTRACTS

All memberships begin with a 12-month month contract that automatically continues month-to-month after the first 12 months are completed.

All memberships are "**Family Memberships**" which is defined as 2 adults (18+) residing at the same residence such as a spouse, partner, s/o, or adult children. Both members are required to obtain certifications or a check-out sail before reserving boats. **Only 1 boat per membership can be reserved at any given time.**

Upgrading/Downgrading - To upgrade, contact the Club and complete a new 12-month contract for the level you

are upgrading to. To downgrade, you must complete your 12-month commitment at your current level first. Upon completing the 12 months, contact the Club in writing with 30-days notice to downgrade your membership.

Cancellation of Membership - It is required to give a 30-day advance written or emailed notification of cancellation to the Club. Cancellation requests made after the 10th of the current month will result in memberships ending on the last day of the following month.

Rejoining Membership - Past members are welcome to rejoin the Club at any time. To rejoin, the Club requires a new 12-month contract and payment for the Reinstatement Fee of \$150.

Monthly Dues - Collected between the 1st and 3rd of the month through recurring credit card payments. By logging into Club Manager, you can update your credit card on file at any time. Another option is to pay one year of dues in advance at the time of membership set-up.

Late payments will result in a fee of \$20 after 20 days.

Unpaid dues will result in suspension of all membership privileges. Members are liable for all attorney's fees, collection, and litigation costs incurred for collection of dues, per the membership contract.

➤ _____
(initial)

MEMBER PRIVILEGES

- ❖ Access to the Club fleet for day sails and overnight charters
- ❖ Discounted rates on sailing lessons
- ❖ 10% discount on retail products in-store and [online](#) with code SSCMEMBER
- ❖ Facebook Community Lounge
- ❖ SSC Women's Room - Facebook Group
- ❖ Cruising Programs, Race Programs, Women's Programs, Clinics, Seminars, and more!

CHECK-OUTS & CERTIFICATIONS

(NEW & REJOINING MEMBERS)

New Member Check-outs

If you are not certified, have certifications from another organization, or have been certified by us and it's been over 1 year since your last on-the-water lesson, you will need to pass a 4-hour on-the-water check-out sail with a Club instructor before your first sail.

Check-outs are available Monday - Friday between 9:00am and 5:00pm. Send your sailing resume to the School Coordinator to get started scheduling your check-out.

Spinnaker Check-outs

In order to use a spinnaker, you will need to either complete the ASA 111 Asymmetrical Spinnaker Handling course or schedule a 2-4 hour spinnaker check-out with one of our instructors - the cost for the spinnaker check-out is \$150.

Members rejoining the Club may be asked to complete a check-out depending on the duration of their leave.

Cancellation/Rebooking Policy for Check-outs

- Check-outs can be rescheduled with 72-hours advance notice. Check-outs canceled within 72-hours will be charged a \$100 late rescheduling fee.
- Check-outs can be rescheduled twice. The 3rd reschedule will be at the rate of a 4-hour private lesson (\$360).

ASA Certifications

If you have been certified through the Club, you will need up to the ASA 103 certification to skipper boats under 30' and up to the ASA 104 certification to skipper boats 30' and over. It is highly recommended to complete ASA 105 Coastal Navigation before your first Overnight Charter.

Overnight Charters

With an ASA 103 certification, you may Overnight Charter between Kingston-Edmonds to the north and Blake Island to the south.

With an ASA 104 certification, you do not have restrictions outside of the "Restricted Sailing Areas" or "No-Go-Zones" listed on pg. 3, 10-14.

New Boat Walk-Throughs

We encourage you to schedule a brief walk-through of boats you are taking out for the first time. Let us know in your reservation if you would like a boat briefing with a Club staff member.

➤ _____
(initial)

CHARTER POLICIES

- ❖ Each Membership is allowed 1 future day sail reservation + 1 future overnight charter in the reservation calendar at a time.
- ❖ **NW Club members, certified at up to the ASA 104 level,** are welcome to use the 30'+ fleet for overnights at the Olympic Club rates.
- ❖ Unlimited same-day reservations (booked day-of).

- ❖ **Half day sails** are any 4-hour block of time.
- ❖ **Full day sails** are any reservations that are more than 4 hours of sailing.
- ❖ **Day Sail Cancellations:** Cancel online using Club Manager or contact the Club. There is no fee for daysail cancellations. Be sure to login and cancel the reservation so the boat will be available for another member's use.
- ❖ **Arriving Late to a Reservation:** The end-time of the reservation will remain the same regardless of the time the member picks up the boat. Reservations will only be held 30 minutes past the scheduled pick up time; if you are running late please give us a call.
- ❖ **Before/After-hours Reservations:** Club hours are 9AM – 5PM daily. If your booking begins while we are closed, please call to ensure the boat is prepped for your sail and to run payment if at the Olympic Club level, or Northwest reserving a 30'+ boat.
- ❖ Early reservation requests must be made before 5:00pm the day before the reservation.
- ❖ **Late Return of a Boat and/or Return after Sunset:** The Club must be notified immediately of a late return. Returns arriving 30 minutes or more after the end time will result in a \$100 Late Return Fee. All returns after sunset will result in the same fee.

The following are **not allowed** while on Club boats.

- ❖ **Red wine is not recommended on Club boats** as it stains decks and interiors.
- ❖ **Spray sunscreen.** Chemicals within spray sunscreens stain the gelcoat on boats.
- ❖ **Smoking in the cabin.**
- ❖ **Alcohol & Drugs.** Anyone (skipper or guest) that is deemed intoxicated at the time of an accident will be fully responsible for all bodily injury or property damage as a result of that accident. This includes cannabis as it is illegal to use while on federally regulated waterways.
- ❖ **Pets & Animals.** If service animals are onboard the member is responsible for removing animal hair, foot prints, etc. after use. If the vessel is found to be dirty a \$100/hr cleaning fee will be charged.
- ❖ **Towing.** Do not tow other boats unless otherwise discussed with the Fleet Manager, Service Manager, or Club Manager.

➤ _____
(initial)

RESTRICTED SAILING/MOTORING CONDITIONS

- ❖ **High Winds (20-25 kts)**

- ❖ **Low Visibility (fog, smoke, heavy snow).** Boats remain docked in Shilshole until the outline of Bainbridge (from H-Dock to J-Dock) can be seen from the office.
- ❖ **Thunder or Lightning.**
- ❖ **Between Sunset and Sunrise.** Boats are to be docked/moored by sunset for day sail and overnight charters.

➤ _____
(initial)

RESTRICTED SAILING/MOTORING AREAS

Sailing is not permitted in the below areas.

- ❖ Ballard Locks - in Lake Union or Lake Washington
- ❖ Sailing further west than a line between Port Angeles, WA and Victoria, BC – and no further north than Port Hardy, BC (top of Vancouver Island).
- ❖ Club designated No-Go Zones pgs. 10 - 14

➤ _____
(initial)

SPINNAKERS, SINGLE HANDING, & ENTERING CANADA

- ❖ **Spinnakers.** Non-racing and racing spinnaker use is allowed after the below are completed.
 - Completion of Asymm. Spinnaker Lesson
 - Passing a spinnaker check-out with an instructor (pg. 2)
 - **Spinnaker Use Policies**
 - Spinnaker use is prohibited in winds gusting 15kts+.
 - The Concierge Fee does not cover damage to spinnakers or spinnaker sheets.
- ❖ **Single Handing.** Single handing is allowed after the below are completed.
 - 3 successful single-handed sails between the hours of 9am and 5pm (during business hours). Once this is completed, notify the Office Staff and we will assign the "Single Handing" rating to your Club Manager account.
 - **Single Handing Policies:**
 - No Single handing with a spinnaker.
 - No Single handing in winds gusting 15kts or more.
 - Members are required to notify the club before sailing alone and provide a float plan before departing from the dock.
- ❖ **Sailing into Canada.** If entering into Canada, it is the member's responsibility to adhere to the current Canadian & U.S. policies and pay any

necessary fees. The Club does not reimburse for these stickers.

➤ _____
(initial)

OVERNIGHT CHARTER POLICIES

In addition to the "Charter Policies" on pg. 2-3.

OUT OF SHILSHOLE BAY MARINA

- ❖ With an ASA 103 certification, you may Overnight Charter between Kingston-Edmonds to the north and Blake Island to the south.
- ❖ **Overnight Charters begin at 9:00am** the first day of the charter and are **required to return by 5:00pm the last day of the charter.**
- ❖ **Overnight Charter Cancellations:** Cancellations or changes can be made up to 14 days before the charter for a full refund of the 25% deposit. Changes or cancellations made within 14 days of the charter are non-refundable.
- ❖ **Holiday Overnight Charter Cancellations (Memorial Day Weekend, 4th of July, & Labor Day Weekend).** Cancellations can be made up to 30 days before the charter for a full refund of the 25% deposit. Changes or cancellations made within 30 days of the charter are non-refundable.

PRE-CHARTER PROCEDURES - OUT OF SHILSHOLE

- ❖ Create a reservation online or over the phone.
 - **Dinghies and BBQs** are available to reserve with your overnight charter by emailing the Club. *Note: there are a limited number of dinghies and BBQs available.*
 - **Dinghies: \$25/reservation**
 - **BBQs: \$15/reservation**
- ❖ **Pre-boarding for Overnight Charters** (Anytime after 5pm the evening before the first day of charter). Please arrange this with the Club at least 48-hours before your departure. We cannot guarantee the boat will be available.
 - Unlimited day sail Members - \$110 + tax
 - Olympic Club Members - \$230 + tax
- ❖ An *Overnight Charter Agreement* will be emailed to you via Adobe Sign within 3-4 days of making the reservation. *Please note; reservations are not considered final until the contract has been received and the 25% deposit paid.*
- ❖ You will be automatically charged for the balance with the card on file *7-days before the charter.*

➤ _____
(initial)

ANACORTES CHARTERS / SAN JUAN ISLANDS

Requirements for Charter

- ❖ [Boat US Towing Membership](#)
- ❖ 5 day, 4 night minimum reservation.
- ❖ (1) overnight charter completed out of Shilshole
- ❖ \$250 Off Site Fee
- ❖ Completion of SJI Navigation Seminar.
- ❖ Complete a [Float Plan](#) and return to the Club 1 week prior to the first day of your charter.
- ❖ ASA 104 certification or equivalent check-out (for all boat sizes)
- ❖ ASA 105 Coastal Navigation (preferred)
- ❖ **Overnight Charters begin at 9:00am** the first day of the charter and are **required to return by 3:00pm the last day** of the charter. Cleaners and divers are scheduled to work on the boat at 3:00pm on the last day. *Charterers will be charged a Late Return Fee of \$350 for remaining on that boat after 3:00pm.*
- ❖ **Overnight Charter Cancellations:** Cancellations or changes can be made up to 30 days before the charter for a full refund of the 25% deposit. Changes or cancellations made within 30 days of the charter are non-refundable.

PRE-CHARTER PROCEDURES - OUT OF ANACORTES

- ❖ Call to book only.
- ❖ **Pre-boarding for Overnight Charters** (Anytime after 5pm the evening before the first day of charter). Please arrange this with the Club at least 24-hours before your departure. We cannot guarantee the boat will be available.
 - Unlimited day sail Members - \$110 + tax
 - Olympic Club Members - \$230 + tax
- ❖ An *Overnight Charter Agreement* will be emailed to you via Adobe Sign within 3-4 days of making the reservation. *Please note; reservations are not considered final until the contract has been received and the 25% deposit paid.*
- ❖ You will be automatically charged for the balance with the card on file *14-days before the charter.*

PRE-CHARTER PREPARATION - OUT OF ANACORTES

- ❖ **The Club does not have an office in Anacortes.** The keys for the boat will be located in the propane locker.
- ❖ **Dinghies and BBQs** are automatically included on boats moored in Anacortes.
 - Propane canisters not included
- ❖ **6 Adult PFDs** will be on board.
- ❖ **Slip Location Arriving/Returning.** You will be notified prior to your charter of the slip the boat will be in on your arrival day. **Note: The slip a member leaves from is NOT always the slip**

they'll come back to. The Club will let you know if it is not the same slip.

➤ _____
(initial)

MEMBER/SKIPPER RESPONSIBILITIES

BOAT USAGE REPORTS

Usage reports are required to be completed within 24-hours of your sail. All issues should be also reported to the Club immediately upon return, in case another member may use the boat. There is a Pre-Sail and Post-Sail section, please complete both sections. Failure to complete usage reports may result in the suspension of member privileges. **After 3 written reminders to submit a report (3 different sails), the Club will charge \$2 per unsubmitted report.**

- ❖ [Small Boat Usage Report](#) (Outboard Engines)
- ❖ [Big Boat Usage Report](#) (Inboard Engines)
- ❖ [Overnight Usage Report](#)

PREPARE YOURSELF AND YOUR CREW

- ❖ Check the [weather forecast](#) and [West Point Buoy](#) for the current wind speed.
- ❖ Check boat [Equipment Lists](#) on the Member Resources Page (password: ssc2016!) to know exactly what to expect on board.
- ❖ **Every person on board is required by law to have a personal flotation device.** Every boat is equipped with at least 4 orange Type II life jackets. Children under the age of 12 are required to wear a life jacket on-board at all times (including on the docks).
- ❖ In winds forecasted to be 15kts or above, prepare your reef before departure. Removing/re-rigging reef lines will result in a \$100 fee.

PRE-SAIL RESPONSIBILITIES

- ❖ Check-in at the office.
- ❖ Begin Usage Report.
- ❖ Check the boat for damage. (Report any damage before you leave the dock)
- ❖ Make sure your crew has proper footwear. Non-slip and non-marking.
- ❖ Instruct crew on the location of all safety equipment including: fire extinguishers, life jackets, flotation devices, horn, and radio. (Channel 16 is for Emergencies and Coast Guard Help)
- ❖ Instruct crew on Man Overboard Procedures.
- ❖ Encourage life jackets to be worn (children are required to wear life jackets).

- ❖ Appoint a crew member to be second in command in case something happens to the skipper.
- ❖ Only members of the Club can maneuver in and out of slips/docks.
- ❖ Review the boat's quick guide and/or manual. Also available here: [Member Resources Page](#) (password: ssc2016!)
- ❖ Check the head, does it work? No paper of any kind in the toilet - all paper goes in a waste bag and put into the trash bin.
- ❖ Secure all hatches and windows.
- ❖ Coil the shore power cord and store it in the lazarette.

POST-SAIL RESPONSIBILITIES

- ❖ **Every boat uses 6 fenders**, 3 to be set up on the port side and 3 to be set up on the starboard side at the widest beam and appropriate height for the dock and rafting.
- ❖ **Every boat uses 4 dock lines** - 1 bow, 1 forward spring, 1 aft spring, and 1 stern line. Attach the spring lines to the base of the shroud or mid-ship cleat if available. Physically check that the boat cannot strike the pier or another boat if the wind changes direction or increases. Never use other lines on the boat as dock lines.
- ❖ Return to the correct slip.
- ❖ Secure halyards, coil all lines.
- ❖ Raise the boom away from the dodger.
- ❖ Release backstay tension.
- ❖ Secure jib sheets with winches.
- ❖ Stow all gear in proper locations.
- ❖ Flush head to pump dry. Wipe seat and empty trash.
- ❖ Clean the cabin and wipe floorboards with wet paper towels.
- ❖ Remove trash bags from bins and dispose of all waste in the dumpsters and recycling bins.
- ❖ Stove: Turn off switch on panel and close valves on propane tank.
- ❖ Check that the **auto-bilge pump switch is set to the AUTO position at all times** and double check before you leave the boat.
- ❖ Plug in the shore power cord, switch the shore power source on, and ensure that the cord is under the lifelines, and no part of the shore power cord hangs in the water.
- ❖ Check that the **switch on the electrical pedestal on the dock is ON** and **that the boat batteries are charging.**
- ❖ **Fall - Winter, each boat will have 1 electric heater and 1 dehumidifier on board.** Before departing, unplug both, empty the dehumidifier and store both in a secure location. Before leaving the boat, plug both back in and turn on to the LOWEST setting. Be sure to set them on the floor (not on a

settee) and aim away from any obstructions to minimize fire risk.

- ❖ Secure all hatches and lock the boat.
- ❖ Wash the boat with dock hose, brush, and soapy water: hull, topsides, cockpit, and stainless steel (jib furler, pulpits, stanchions, lifelines, turnbuckles, mast base, etc.) to remove corrosive salt.
- ❖ Clean anchor and chain, if used.
- ❖ Check dock lines to ensure that they are snug and properly tied to dock cleats.
- ❖ Finish and submit Usage Report.

➤ _____
(initial)

ACCIDENTS/DAMAGE WHILE ON BOARD

This pertains to situations where no persons onboard are injured and the boat is NOT taking on water. In situations where these are present, immediately hail the USCG on channel 16.

1. Check for injuries.
2. Take photos, email photos to the Club and exchange information with others involved.
3. Contact a Club representative for instruction.
 - a. You may be asked to stay with the boat longer than their reservation time.
 - b. You may be asked to deliver the boat to the nearest marina and/or Shilshole Bay Marina immediately.
 - c. You may be responsible for finding and paying for their own travel back to Shilshole Bay Marina.
 - d. The Club will not reimburse for Vessel Assist unless the member has been directed by the Club to call them.
4. Once back to shore, you are required to **complete an Accident/Incident Report within 24-hours** of your return to shore. This goes for accidents caused by the member or another boat as well as any damage that occurs outside of user negligence. Failure to complete this form will result in suspension of membership privileges.

➤ _____
(initial)

COAST GUARD BOARDINGS

The USCG can board a vessel without probable cause. Generally, their intention is to promote safe boating and boating education. In the event that your vessel is the subject of a boarding, a uniformed boarding team (armed law enforcement) will notify you that they are coming aboard to conduct a USCG boarding. Once aboard, they will conduct an initial safety inspection. They will ascertain whether you have the required safety equipment (life

jackets, etc.).

The boarding officer will also examine the vessel's registration or documentation papers. In the event that the vessel is deficient in its documentation or safety equipment, the boarding officer will issue a written warning, outlining the vessel's deficiencies.

In the event a member is boarded by the United States Coast Guard, members are to remain compliant for the duration of the inspection. After the charter/day sail, please notify the office staff and send an email to the current Club Manager with a description of the boarding and any warnings issued by the Coast Guard.

BE WHALE & MARINE MAMMAL WISE

Before heading out on your sail, learn the laws that protect marine mammals [here](#) and take the below precautions when encountering marine mammals.

- ❖ Boats to stay 300 yards from Southern Resident killer whales on either side.
- ❖ Boats to stay 400 yards out of Southern Resident killer whale's path/in front and behind the whales
- ❖ Boats to go slow (<7 knots) within ½ mile of Southern Resident killer whales
- ❖ Disengage engines if whales appear within 300 yards.
- ❖ Boats to stay 100 yards from all other marine mammals (e.g. humpback whales, gray whales, sea lions and seals).

➤ _____
(initial)
➤

INSURANCE

Members are covered under the individual boat's insurance policy. The policy covers damage to the boat, personal injury to the member and their guests, as well as personal injury to other persons or property involved in an accident.

CONCIERGE FEE (\$200/year)

When signing up for membership, a Concierge Fee is required and will be charged on the same day annually. This fee includes the Insurance Deductible Waiver, pump-out, and fuel-up services (excluding post-overnight charter responsibilities of the member - see Overnight Charters pg. 3-4). The Concierge Fee is non-refundable or transferable.

INSURANCE DEDUCTIBLE WAIVER (IDW)

The Insurance Deductible Waiver assists with the possible financial burden of an accident on the water or at the dock.

DAMAGE COVERED BY IDW

- ❖ Reported (by the member) Damage
- ❖ Damage to Club boats & other vessels involved
- ❖ Interior/Exterior Structural Damage
- ❖ Gelcoat
- ❖ Steering, freshwater, propane, electrical, engine, and head systems (with the exception of clogged heads)
- ❖ Standing, running, and safety rigging
- ❖ Deck hardware
- ❖ Sails (with the exception of Spinnakers)
- ❖ Lights
- ❖ Electronics
- ❖ Refrigerator/icebox
- ❖ Portlights, deadlights

DAMAGE NOT COVERED BY IDW

- ❖ Unreported (by the member) damage
- ❖ Whilst the skipper was under the influence of drugs or alcohol
- ❖ Whilst chartering a boat reserved for ANY race event (including departing/arriving)
- ❖ If damage occurs while sailing/motoring in restricted sailing areas and/or conditions pgs. 3, 10-15
- ❖ Damaged spinnaker/spinnaker sheets
- ❖ Sheets & lines caught in propellers

LOST/ BROKEN ITEMS ARE NOT COVERED BY IDW

- ❖ Boat locks (\$30)
- ❖ Dock lines (\$50), Fenders (\$50+)
- ❖ Anchor/System parts (\$150+)
- ❖ BBQs/Accessories (\$100+)
- ❖ Dinghy/Oars (\$100+)
- ❖ Winch handles (\$150)
- ❖ Cushions (\$1000+)
- ❖ Galley equipment (per item cost)
- ❖ Canvas (sail, helm, winch covers, etc.)
- ❖ Safety equipment (\$50+)

ADDITIONAL FEES

- ❖ Docking a boat in the incorrect slip (\$150)
- ❖ Leaving a boat excessively dirty (\$80+)

- ❖ Leaving the boom resting on the dodger (\$150)
- ❖ Neglecting to Pump-out after Overnight (\$150)
- ❖ Neglecting to Fuel-up after Overnight (fuel + \$150)
- ❖ Deck/Non-skid stains (\$100+)
- ❖ Late Return Fee Shilshole (\$100)
- ❖ Late Return Fee Anacortes (\$350)
- ❖ Skied halyards (\$150)
- ❖ Removing/Re-rigging reef lines (\$150)
- ❖ Fishing/Crab pot damage/mess (\$100+)
- ❖ Jamming in-mast furling sails (\$100+)
- ❖ Clogging head (\$100+)
- ❖ Bringing an animal on board - cleaning (\$250)
- ❖ Chase/Rescue boat (\$150/hr)

MEMBER PROGRAMS

FLOTILLAS / GROUP SAILS / CRUISES

Member flotillas are events put together by the Club for members to explore sailing destinations in Puget Sound. The Club reserves the boats and members sign-up for specific boats as crew or skipper. These events are great ways to meet and learn from other members and gain experience sailing in the Sound.

Note about Skippers: Since these are co-operative programs, members need to volunteer to skipper. There may be times where we ask a member who has signed up to the crew, to skipper for the event.

- ❖ Payment is due at the time of registration.
- ❖ Maximum number of guests: 2
- ❖ Moorage at destinations is paid by Club members
- ❖ **Cancellations** must be made at least 72-hours in advance for a full refund. If the Club cancels the event due to weather or visibility, members will be refunded the cost of the program.
- ❖ If an accident or damage occurs during a Member Program, **the crew and skipper assume equal responsibility**. See Concierge Fee above.

OVERNIGHT CRUISES

Overnight cruises are offered a few times a year with a couple of different registration options.

- ❖ Sign-up for a berth and have the Club assign you to a boat with a qualified skipper.
- ❖ Sign-up to skipper your own boat with your own crew.
- ❖ Members are responsible for dockage/moorage fees, provisioning and supplies.

WOMEN'S PROGRAMS

Women's Programs are organized monthly. The [SSC Women's Room](#) on Facebook is a great place to meet other women sailors, participate and share sailing related material, as well as stay up to date on the latest Women's Programs at the Club.

- ❖ The Club's Women's Program has launched countless women into skippering, boat ownership, racing, cruising, and even becoming certified sailing instructors!
- ❖ ... and lots of fun, laughter, and friendships!
- ❖ The oldest continuously active on-the-water women's sailing group in the area!
- ❖ Monthly sailing, training, and social gatherings.
- ❖ Periodic overnight women's cruises and destination bareboat charters
- ❖ Women-only seminars on topics like Diesels, Spinnakers, Emergencies Aboard, Docking, Racing Rules, How to Become a Certified Sailing Instructor, NoAA guided tour, and more!
- ❖ For all club members and spouses/partners that identify as female/non-binary.

FUN RACES

Fun Races offer members a chance to experience racing in a relaxed, non-competitive environment. Typically on the J/80s with up to five members per boat and a qualified (at least 103 certified) skipper. With just a few boats on the course this is a great way to practice sail trim, boat handling, and learn more about racing.

CLINICS & SEMINARS

The Club puts together various online and in-person clinics, seminars, and workshops throughout the year. These are the perfect way to get members together and learn more about the various components or skills needed to be successful on the water.

FRIDAY NIGHT SAILFEST

Friday Night Sailfest is a fun casual race around Shilshole Bay in August. It is open to members and non-members and other sailboats from the area are invited to participate. The event begins with a fun race inside Shilshole Bay, followed by a party on the patio with free hotdogs, beer, wine, and other drinks along with our famous raffle. Registration is free and required for flotilla participation.

SUNSET & FULL MOON SAILS

In our 3 hour sunset sail, you will sail out on beautiful Puget Sound while watching the sunset and/or moonrise over the Olympic Mountain range. Take someone special out or enjoy a relaxing evening on the water with friends. This is a great opportunity to practice your skills on the helm or meet others in the sailing community. No sailing experience is necessary. We will provide a licensed captain and lifejackets. Food and drink may be brought onboard for a picnic on the water.

RACE PROGRAMS

EVENING RACE SERIES - SPRING/SUMMER/FALL

We hold an annual **Race Program Information Meeting** early in the year (Jan/ Feb). This meeting is an explanation of our programs and a great opportunity to get a head start planning your sailing season

COACHED TEAMS - New & Intermediate Racers

- ❖ Available for Monday, Wednesday, and Weekend Regattas
- ❖ Members are organized into teams and assigned an experienced instructor as their race coach.
- ❖ The crew will learn advanced sail trim and tactics while learning various positions onboard.
- ❖ Placement on a team can be changed after each series if spots on other teams become available.

MEMBER SKIPPED TEAM - New & Intermediate Racers

- ❖ Available for STYC Ballard Cup on Mondays.
- ❖ New crews and returning racers who would like some guidance while building their skills.
- ❖ Those interested will be placed on a team with a member skipper and other members as crew. The experience level of the skipper and crew may vary and this gives all participants the opportunity to expand their racing experience.
- ❖ Members are expected to commit to a complete series before requesting to change teams.

WOMEN'S RACE TEAM - All Experience Levels

- ❖ Women's racing program has been in action for 8 years, and has introduced dozens of women to racing.
- ❖ Open to all women members, you don't have to "know someone" or have any previous racing experience!
- ❖ Available for Mondays and some Weekend Regattas
- ❖ Members are organized into teams and assigned an experienced instructor or member as their race skipper.

RUN-YOUR-OWN-BOAT (RYOB) - Experienced Racers

- ❖ Available Mondays or Wednesdays (depending on boat availability)
- ❖ RYOB program gives experienced racers the opportunity to reserve a J/80, or J/105 all season.
- ❖ Members put together their own crew made up of family, friends, or other Club members. This program is the closest to racing your own boat, without the hassle of boat ownership.
- ❖ Race Entry Fees (yacht club) and Club (SSC) Race Fees are paid by the skipper of the team.

REGATTAS

Regattas offer members the opportunity to join an experienced skipper onboard our J/105s and learn about sail trim, boat positions, working as a crew, and race tactics. These are usually all-day events and members may sign up for single days or the full weekend, when available.

TEAM BUILDING & CORPORATE PROGRAMS

Whether you work with several people or several dozen, sharing experience outside of the office is a good thing. Team building events at Seattle Sailing Club occur in a safe and supportive environment while expanding comfort zones, promoting synergy, and bringing people together. The benefits in the workplace are innumerable.

RACING EVENT (4 HOURS)

Groups will divide into crews of 4-6 people, participate in a brief learn-to-sail chalk talk in our classroom, and then get out on the water. Teams will spend the first portion of the event practicing, and the remainder participating in a series of short sailboat races.

CRUISING EVENT (4-8 HOURS)

Take your group to any number of local day sailing destinations, the sailing journey is always the best part, but the possibilities when you get there are endless: wine-tasting on Bainbridge Island; a picnic at Blake Island State Park; a nice meal on the water at a local port.

NO-GO-ZONES & COMMON GROUNDING LOCATIONS PUGET SOUND

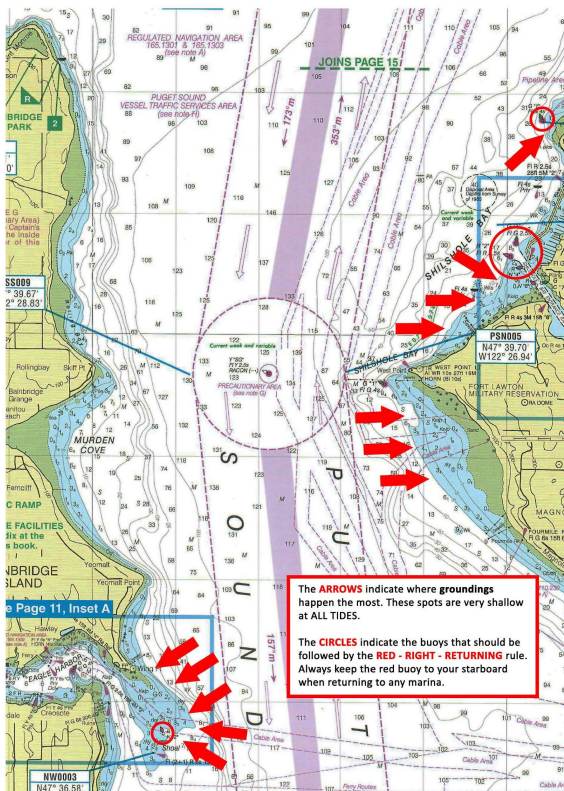
Pages 10-14 are the charted areas the Club has deemed as “No-Go-Zones” when chartering Club boats in the San Juan Islands or the Sound. No-Go-Zones are known areas with dangerous navigational hazards. For your safety, Club boats are prohibited from sailing, anchoring, or motoring in these areas. The **Concierge Fee does not apply** in these areas and any damage to a Club boat within these areas will be an out of pocket expense for the skipper of the boat. The NGZs are highlighted in red on each chart section.

Location of Past Groundings in Central Sound

1. Kingston Marina
2. Agate Pass
3. Blake Island
4. Poulsbo Marina
5. Shipping Canal
6. Meadow Point Buoy

Locations of Past Groundings in North Sound

1. Swinomish Channel



➤ _____
(initial)

NO-GO-ZONES

PUGET SOUND SOUND NO-GO ZONES

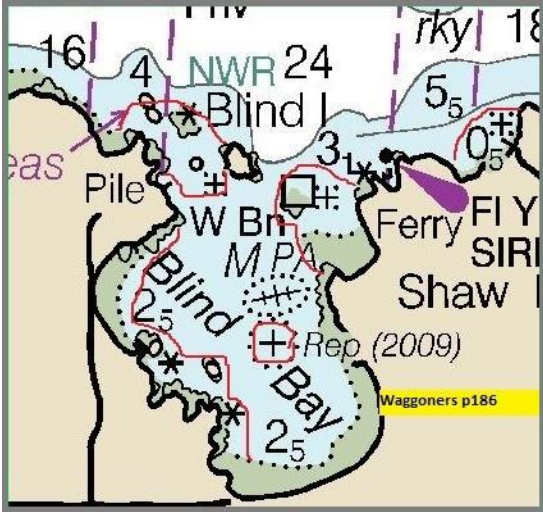
The **Red Arrows** displayed on the diagram above are No-Go Zones in Central Puget Sound.

- ❖ Meadow Point Buoy (See Red Circle & Arrow)
- ❖ Eagle Harbor Entrance (See Red Arrows)
- ❖ South of Shilshole (See Red Arrows)
- ❖ South of Discovery (see Red Arrows)

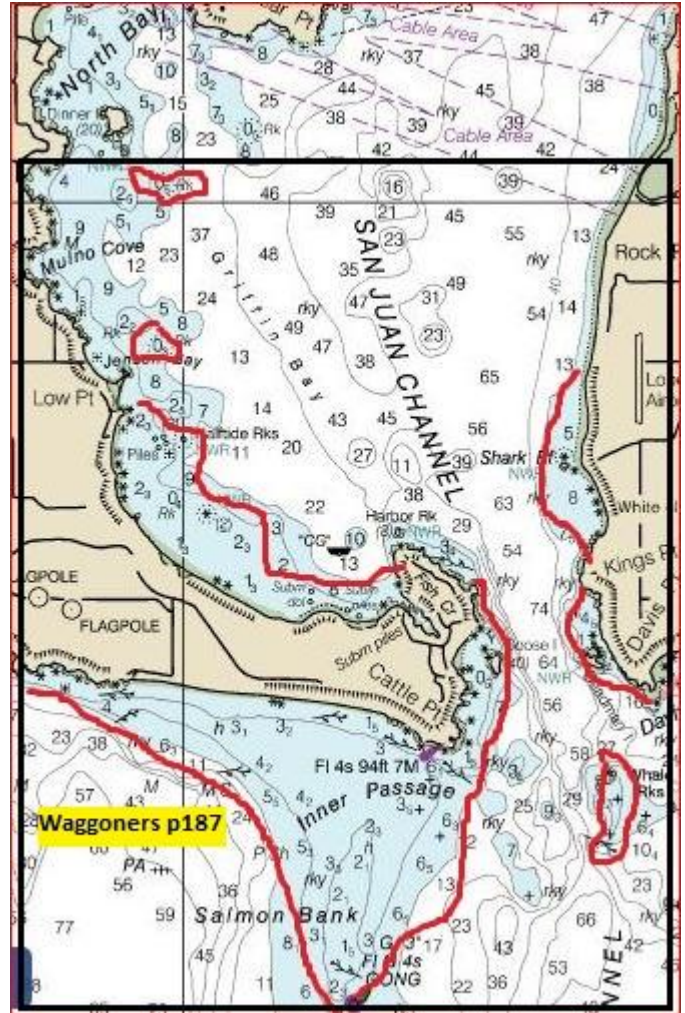
AREAS OF COMMON GROUNDINGS

While the locations below are not No-Go-Zones, it is critical to be vigilant while underway in these areas.

NO-GO-ZONES SAN JUAN ISLAND/ANACORTES



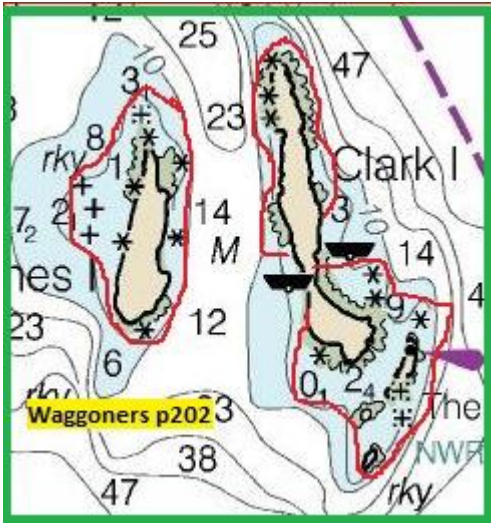
Blind Bay



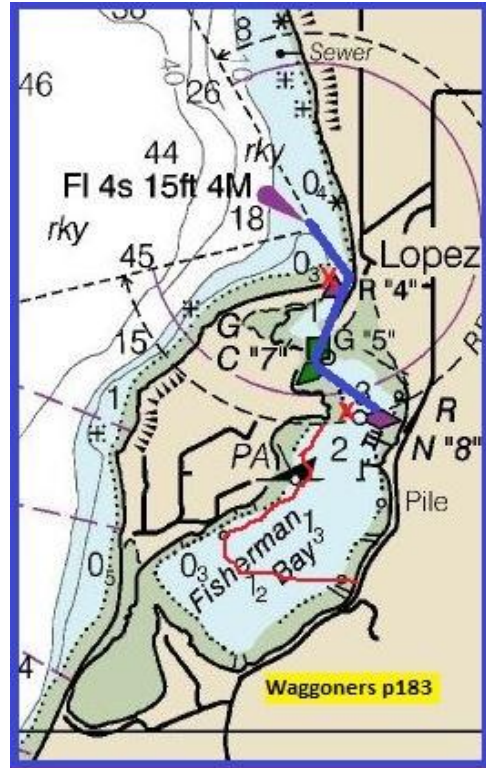
Cattle's Pass



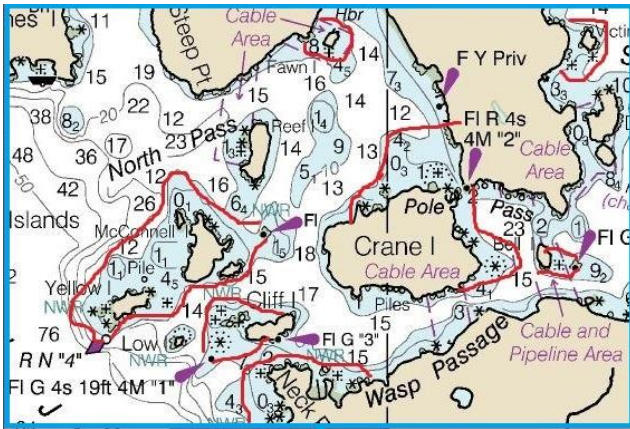
Burrows Bay



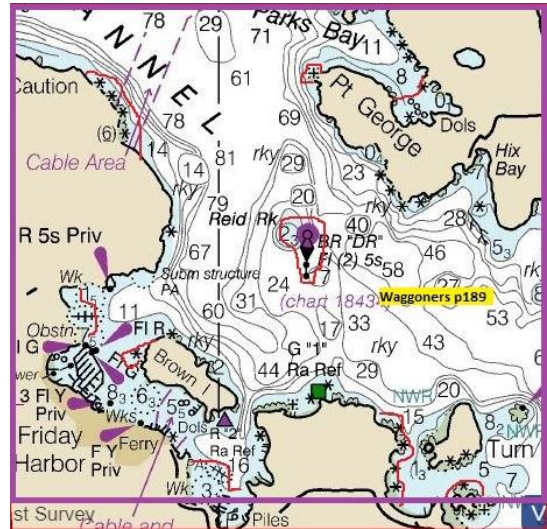
Clark & Barnes



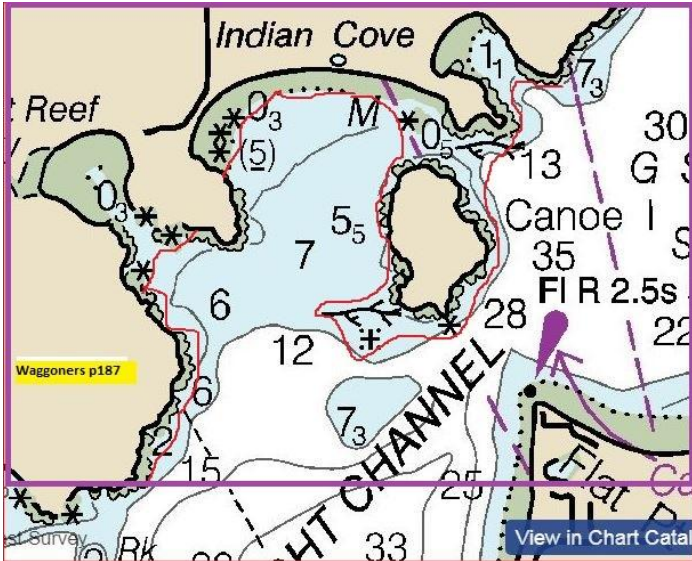
Fisherman's Bay



Deer Harbor



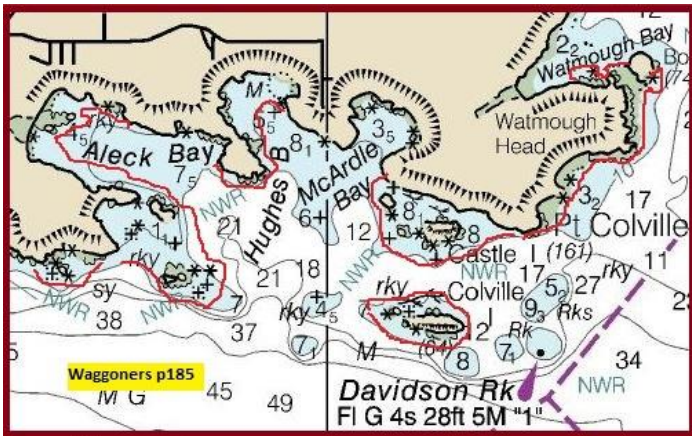
Friday Harbor



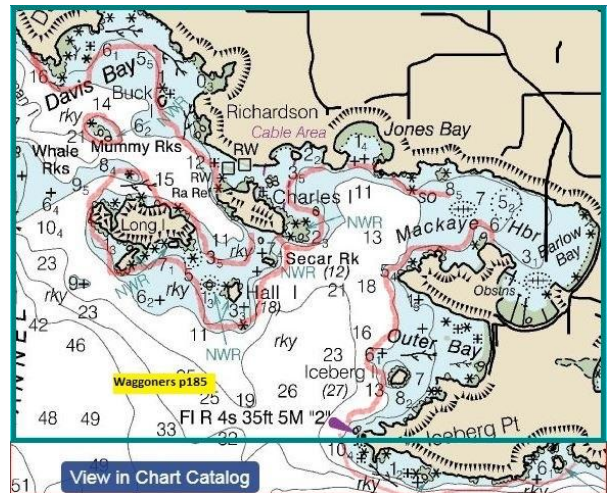
Indian Cove - Shaw Island



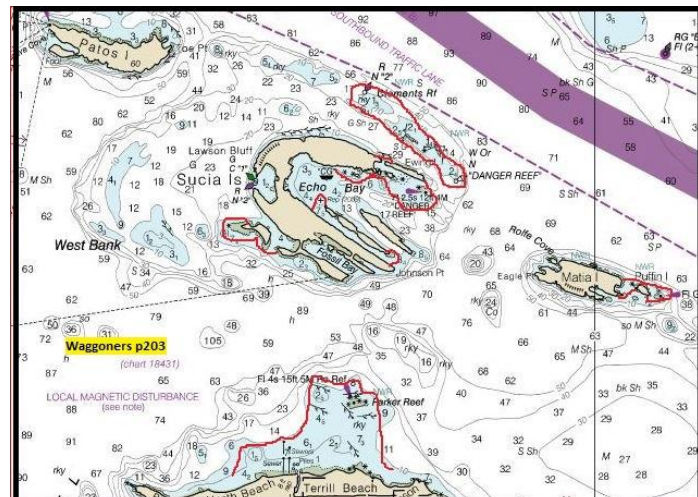
Lopez Pass



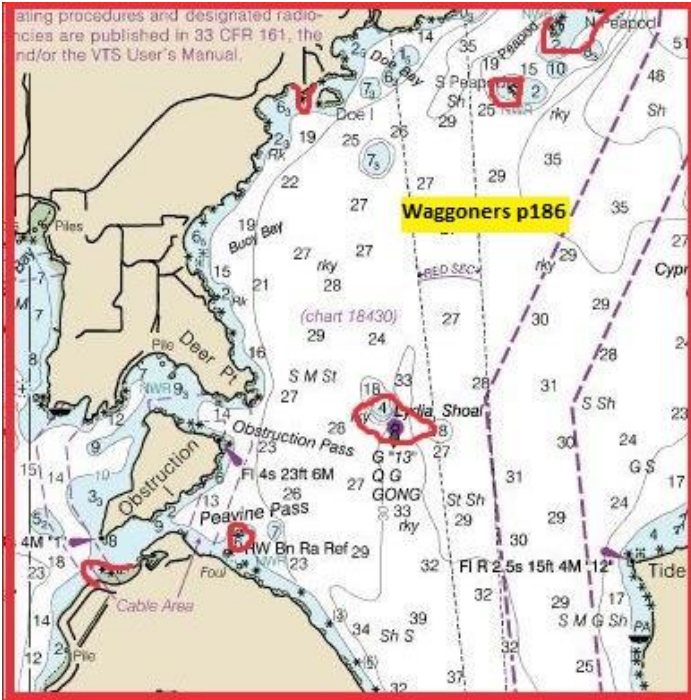
Lopez Island - Aleck Bay



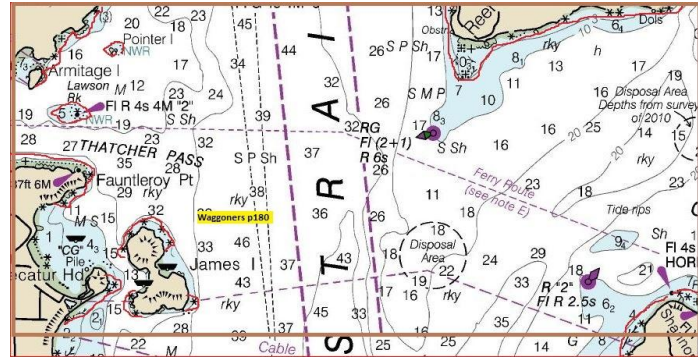
Lopez South End



North of Orcas Island



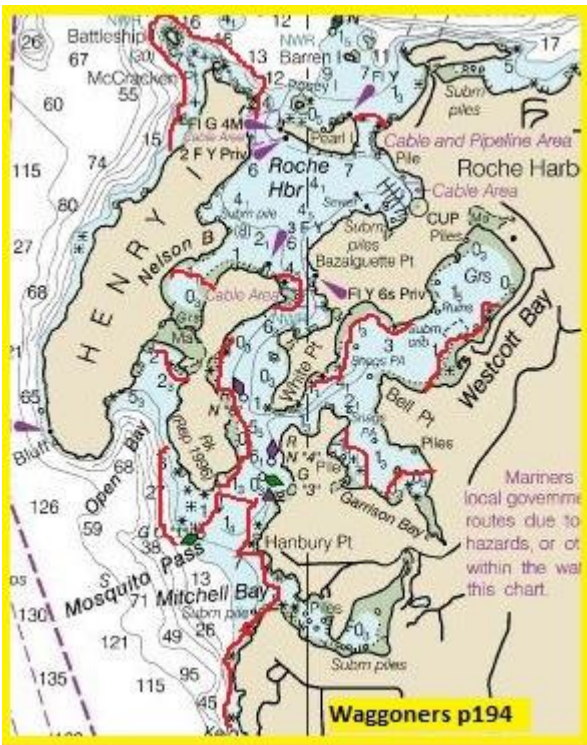
Obstruction Island



Rosario - James Island



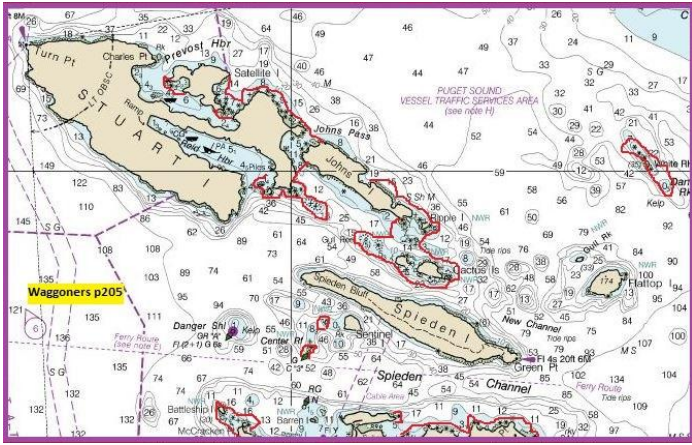
Rosario - Sinclair Island



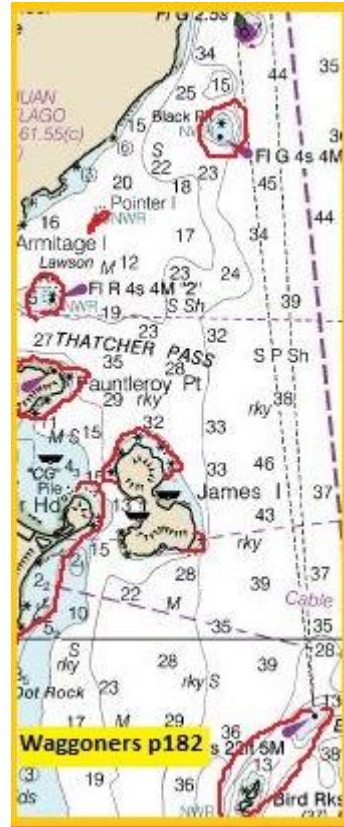
Roche Harbor



Spencer Spit



Stuart Island



Thatcher Pass - Entrance

➤ _____
(initial)