

2025

RACE PROGRAM GUIDE



CONTACT US

www.seattlesailing.com

(206)782-5100

info@seattlesailing.com

[@seattlesailingclub](https://www.instagram.com/seattlesailingclub)



INSIDE THE RACER HANDBOOK



NEW 2025 Racer Handbook Available!

Our Racer Handbook serves as a resource guide, equipping skippers and crews with the essential information needed for a successful on-water experience. It features detailed descriptions of skipper and crew levels tailored to your experience, aiding in team placement aligned with your goals.

The handbook also provides insights into race options, planning details, and associated fees.

External links to forms, yacht club webpages, and additional resources, including training materials, are included for easy reference.

A glimpse of what's inside:

- Racing rules
- Racing positions
- Racing terms
- Crew and Skipper Qualifications
- Race, practice, and preparation dates
- Team assignment schedule
- Race fees
- Policies and procedures
- Yacht Club information
- Volunteer opportunities
- and more!



WELCOME RACERS!



Welcome to Seattle Sailing Club's Race Program! We're here to help sailors dive into club racing in a welcoming and supportive setting, with a focus on mastering sail trim and boat handling. Whether you're new to sailing or have some experience, join us for weekday evening races, weekend events, regattas, and long-distance challenges. It's the perfect opportunity to enjoy time on the water and sharpen your sailing skills!



ELIGIBILITY & CERTIFICATIONS

MEMBERSHIP REQUIREMENT

In order to participate in Seattle Sailing Club's Race Program, **Club Membership is required.**

As a member of our Sailing Club, not only are you able to participate in our Race Programs, but you also gain access to the boats in our fleet for day sails and overnight charters on the Puget Sound, discounted rates on lessons and sailing gear, and weekly opportunities to meet the SSC community through Member Programs!



MINIMUM CERTIFICATION

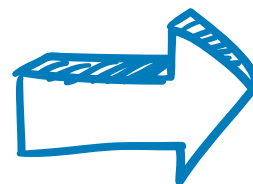
We require that you hold at ASA 101 Certification, or equivalent.

RECOMMENDED CERTIFICATION

We also recommend anyone participating in our Race Programs be certified in:

- ASA 103: Basic Coastal Cruising (or equivalent)
- ASA 111: Asymmetrical Spinnaker Handling (offered by Seattle Sailing Club)

CREW & SKIPPER LEVEL RACER REQUIREMENTS



CREW/SKIPPER REQUIREMENTS



GENERAL REQUIREMENTS

- Club membership
- [Submit your Racer Interest Forms](#)
- [Racer Release & Indemnity Form](#)
- [Review the Racer Handbook](#)

CREW REQUIREMENTS

- **Crew-Level Racers:**
 - ASA 101 or equivalent
 - Pass [Crew-Level Racing Clinic](#) and Crew-Level Racer Quiz
 - Recommended: ASA 111 or Spinnaker Checkout
- **Returning Crew-Level Racers (18+ races with Seattle Sailing Club):**
 - Pass Crew-Level Quiz
 - Recommended: Session 2 of the Crew-Level Racing Clinic

SKIPPER REQUIREMENTS

- **Skipper-Level Racers:**
 - ASA 103 + ASA 111 (or equivalent) for Skippers of boats under 30' OR
 - ASA 104 + ASA 111 (or equivalent) for Skippers of boats 30' and over
 - SSC Coach Approval, demonstrated experience at the Crew Level or equivalent, verified through Club records or comparable qualifications.
 - Fill out a [sailing resume](#) and email info@seattlesailing.com
 - Pass Skipper-Level Quiz and
 - EITHER [Skipper-Level Racing Clinic](#) or [Skipper-Level Checkout](#)
- **Returning Skipper-Level Racers:**
 - Pass Skipper-Level Quiz and
 - EITHER [Skipper-Level Racing Clinic](#) or [Skipper-Level Checkout](#)



2025 RACE PROGRAMS



WEEKDAY EVENING RACES



Our evening Series programs, featuring Sloop Tavern Yacht Club's Ballard Cup (All levels) on Mondays and CYC Sound Wednesdays (Intermediate level) on Wednesdays. With options like Coached, Member Skipped, and Run-Your-Own-Boat teams, participants enjoy learning and racing in PHRF and one-design races.

From complete beginner, to running your own boat, members can sign up for a series, as a sub, or for the whole season!

BALLARD CUP

- Cost is dependent on membership level and commitment.
- Substitute position (per race): \$76+
- 1 Series (6 races): \$266+
- Full Season (3 series, 6 races per series): \$720+

CYC SOUND WEDNESDAY

- Cost is dependent on membership level and commitment.
- Substitute position (per race): \$79
- 1 Series (5-6 races): \$663+
- Full Season (4 series, 5-6 races per series): \$1062+



WEEKEND & SIGNATURE RACES

WEEKEND RACES

- Cost is dependent on membership level, race, and commitment.
- 1 day Race: \$172+
- Year Round

Immerse yourself in strategic, competitive sailing with a strong educational focus and rewarding experiences. Our programs offer racing opportunities in a variety of PNW regional regattas, including benefit races and double-handed races. Choose to polish your skills on a Coached team or explore the camaraderie of a Member Skipped or Run-Your-Own-Boat team.

Our **Weekend Race** program supports racing in 19+ weekend races throughout the year, below are just a few:

- **CYC Center Sound Series**
- **CYC Puget Sound Spring Series**
- **SYC Tri-Island Race Series**
- **STYC Down the Sound**
- **STYC Women at the Helm**
- **Pink Boat Regatta**
- **Adventuress Cup**
- **SYC Grand Prix Regatta**
- **& many more!**

SIGNATURE RACES

- Coached Teams
- Cost is dependent on membership level and race.
- Swiftsure - Pricing starts at: \$2106+
- Race Week Bellingham - Pricing starts at: \$172+ (1 day of racing), \$834+ (5 days of racing)
- Round the County - Pricing starts at: \$809+

Our Signature Race program is the pinnacle of PNW racing. Choose to race in the Swiftsure International race, an overnight race out of Victoria, B.C., where you can combine racing with completing your ASA 106 Advanced Coastal Cruising certification during the event.

Explore other options such as Race Week Bellingham, a 5-day adult summer camp with daily races and nightly celebrations, and Round the County, a challenging race around the San Juan Islands in the Fall.



TEAM ASSIGNMENTS & SCHEDULE

TEAM ASSIGNMENT & SCHEDULE

Team invitations are emailed to racers following the Team Assignment Schedule. Carefully review the Race Dates, Form Deadlines, and Team Assignment dates. Make sure to save the dates in your calendar so you don't miss any racing opportunities!

Assignments will be delivered **via email over 3-7 days. Racers will be provided a response-by date (3-7 days)**, and non-response within the given timeframe will be considered as a rejection of the invitation.

Respond promptly with confirmation or rejection of your team assignment invitation.



SUBSTITUTIONS

The Club race program is highly popular, often with limited team spaces. To address demand, we maintain substitute lists for all racing programs. It is crucial to promptly inform your team and the Club if you are unavailable for a race, allowing time to coordinate a substitute.

Crews can independently coordinate substitutes as long as the Club has approved the sub. Subs for Coached and/or Member Skipped teams must have an active, in good standing, Club membership and will be charged for their participation.

Substitutes will be contacted as needed to match the skill and experience needed for a particular team. Several people on the sub list may be contacted, placement will be on a first response basis.

Teams must meet minimum crew requirements to race; otherwise, they won't participate, and there are no refunds for single race cancellations.

Process & Policies

Please refer to the [Racer Handbook](#) for more details on the process and policies pertaining to substitutions.

2025 RACE DATES



WEEKDAY EVENING RACES - DATES

STYC BALLARD CUP

Series	Race 1	Race 2	Race 3	Race 4	Race 5	Race 6
BC 1	4/14	4/21	4/28	5/5	5/12	5/19
BC 2	6/2	6/9	6/16	6/23	6/30	7/7
BC 3	7/14	7/28	8/4	8/11	8/18	8/25

CYC SOUND WEDNESDAYS

Series	Race 1	Race 2	Race 3	Race 4	Race 5	Race 6
Spring	4/9	4/16	4/23	4/30	5/7	5/14
Solstice	5/21	5/28	6/4	6/11	6/18	6/25
Summer	7/2	7/9	7/16	7/30	8/6	8/13
Fall	8/20	8/27	9/3	9/10	9/17	9/24

BALLARD CUP PRACTICES

- & -

SOUND WEDNESDAYS PRACTICES

- **Coached Teams:** 1 practice required per series. Practice will be coordinated by the team's coach in collaboration with the crew.
- **Member Skipped Teams:** 1 practice per series is recommended. Practice will be coordinated by the team's skipper in collaboration with the crew.
- **RYOB Teams:** 1 practice per series is recommended.

WEEKEND EVENING RACES - DATES

EVENING SERIES DEADLINES

	First Race	Form Deadline	Team Coordination	Team Assignment Sent
BC1	4/14	3/3	3/3 - 3/9	3/10 - 3/16
BC2	6/2	5/5	5/5 - 5/11	5/12 - 5/18
BC3	7/14	6/16	6/16 - 6/23	6/24 - 7/1
SWSp	4/9	2/26	2/27 - 3/5	3/5 - 3/11
SWSa	5/21	4/23	4/23 - 4/30	4/30 - 5/6
SWSu	7/2	6/4	6/4 - 6/10	6/11 - 6/17
SWFa	8/20	7/23	7/24 - 7/31	8/1 - 8/7

**MORE INFORMATION IS AVAILABLE
IN OUR RACER HANDBOOK**



WEEKEND RACES - DATES

	Race Dates	Form Deadline	Team Coordination	Team Assignment Sent
Center Sound Series	3/1, 3/8, 3/22	1/15	1/21 - 1/27	1/27 - 1/31
Puget Sound One Design	3/29 - 3/30	2/7	2/10 - 2/17	2/18 - 2/25
Blakely Rock Benefit	4/5	2/7	2/10 - 2/17	2/18 - 2/25
Puget Sound Spring Regatta	4/12, 4/13	2/11	2/12 - 2/19	2/20 - 3/2
Adventuress Cup (~80 days)	4/26	2/11	2/12 - 2/19	2/20 - 3/2
Tri-Island Series	4/26, 5/10, 5/31	2/25	2/25 - 3/3	3/4 - 3/10
Race to the Straits*	5/3 - 5/4	3/5*	N/A	N/A
Three Buoy Fiasco	6/7	4/8	4/8 - 4/14	4/15 - 4/21
J-Fest	6/14, 6/15	4/15	4/15 - 4/21	4/22 - 4/28
Women at the Helm 1	6/28	4/21	4/21 - 4/27	4/28 - 5/4
Down the Sound*	8/2, 8/3	6/3*	N/A	N/A
Pink Boat Regatta	9/6	6/9	6/9 - 6/15	6/16 - 6/22
J&J Race*	9/7	7/9*	N/A	N/A
Women at the Helm - Regatta	9/21	7/21	7/21 - 7/27	7/28 - 8/3
Foulweather Bluff	10/4	8/4	8/4 - 8/10	8/11 - 8/17
Puget Sound Sailing Champ.	10/11, 10/12	8/11	8/11 - 8/17	8/18 - 8/24
Great Pumpkin Regatta	10/18	8/18	8/18 - 8/24	8/25 - 8/31
Grand Prix	10/24, 10/25, 10/26	8/24	8/25 - 8/31	9/1 - 9/7
Fall Regatta	11/1	9/1	9/2 - 9/8	9/9 - 9/15
Snowbird 2025-2026	11/15, 12/13, 1/10/26, 2/7/26, 3/21/26	9/29	9/29 - 10/5	10/16 - 10/12

*Double handed racing organized via request

SIGNATURE RACES - DATES

SWIFTSURE (RVICYC)

All-Crew Meeting	4/10
Delivery & Race Planning Meeting	5/8
Boat Prep	5/16 - 5/22
Delivery Date	5/23
Race	5/24
Race	5/25
Delivery Date	5/26

BELLINGHAM RACE WEEK

All-Crew Meeting	N/A
Delivery & Race Planning Meeting	6/26
Boat Prep	6/27 - 7/18
Delivery Date	7/19 - 7/20
Race 1	7/21
Race 2	7/22
Race 3	7/23
Race 4	7/24
Race 5	7/25
Delivery Date	7/26 - 7/27

ROUND THE COUNTY (OIYC)

All-Crew Meeting	10/2
Delivery & Race Planning Meeting	10/29
Boat Prep	11/6, 11/7 6:00 PM
Delivery Date	11/7
Race	11/8
Race	11/9
Delivery Date	11/10

**MORE INFORMATION IS AVAILABLE
IN OUR RACER HANDBOOK**



2025 RACE FEES



WEEKDAY EVENING RACES - FEES

STYC BALLARD CUP

Boat	Series	COACHED TEAM			MEMBER SKIPPED TEAM*		
		OLY CLUB	NW CLUB	SJ CLUB	OLY CLUB	NW CLUB	SJ CLUB
J/80	1 Series	\$642	\$449	\$339	\$492	\$341	\$243
	3 Series	\$1732	\$1213	\$914	\$1328	\$920	\$655
	RYOB*	-	-	-	\$4562	\$2281	\$1597
J/105	1 Series	\$642	\$449	\$339	\$544	\$380	\$266
	3 Series	\$1732	\$1213	\$914	\$1469	\$1027	\$720
	RYOB*	-	-	-	\$6555	\$4588	\$3212
	SUB FEE	\$76			\$79		

*10.25% tax will be added to the total amount during checkout.

CYC SOUND WEDNESDAYS

Boat	Series	COACHED TEAM			MEMBER SKIPPED TEAM*		
		OLY CLUB	NW CLUB	SJ CLUB	OLY CLUB	NW CLUB	SJ CLUB
J/80	1 Series	\$689	\$487	\$367	\$545	\$380	\$266
	4 Series	\$2481	\$1754	\$1320	\$1958	\$1372	\$959
	RYOB*	-	--	--	\$4719	\$2360	\$1652
J/105	1 Series	\$689	\$487	\$367	\$597	\$420	\$296
	4 Series	\$2481	\$1754	\$1320	\$2148	\$1510	\$1062
	RYOB*	-	-	-	\$6686	\$4680	\$3276
	SUB FEE	\$76			\$79		

*Sales tax will be added to the total amount during checkout.

WEEKEND RACES FEES

COACHED WEEKEND RACING RACE FEES

RACE FEES	OLYMPIC CLUB	NW CLUB	SJ CLUB
1 Day	\$364	\$289	\$231
2 Days	\$692	\$549	\$440
3 Days	\$1038	\$824	\$659
4 Days	\$1383	\$1098	\$878
5 Days	\$1728	\$1373	\$1098

MEMBER SKIPPED WEEKEND RACING RACE FEES*

RACE FEES	OLYMPIC CLUB	NW CLUB	SJ CLUB
1 Day	\$280	\$217	\$172
2 Days	\$532	\$412	\$328
3 Days	\$800	\$619	\$491
4 Days	\$1067	\$824	\$654
5 Days	\$1332	\$1031	\$834

RYOB WEEKEND RACING RACE FEES*

RACE FEES	OLYMPIC CLUB	NW CLUB	SJ CLUB
1 Day	\$651	\$504	\$389
2 Days	\$1236	\$957	\$740
3 Days	\$1853	\$1435	\$1110
4 Days	\$2472	\$1913	\$1478
5 Days	\$3090	\$2392	\$1847

*Sales tax will be added to the total amount during checkout.

SIGNATURE RACES - FEES

SWIFTSURE COACHED RACE FEES

RACING ONLY		
OLYMPIC CLUB	NW CLUB	SJ CLUB
\$2808	\$2371	\$2106
RACING + ASA 106		
OLYMPIC CLUB	NW CLUB	SJ CLUB
\$4693	\$4255	\$3991

RACE WEEK BELLINGHAM

RACE FEES	OLYMPIC CLUB	NW CLUB	SJ CLUB
1 Day	\$364	\$289	\$231
2 Days	\$692	\$549	\$440
3 Days	\$1038	\$824	\$659
4 Days	\$1383	\$1098	\$878
5 Days	\$1728	\$1373	\$1098

RTC COACHED RACE FEES

OLYMPIC CLUB	NW CLUB	SJ CLUB
\$1516	\$1296	\$1134
RTC MEMBER SKIPPED RACE FEES*		
OLYMPIC CLUB	NW CLUB	SJ CLUB
\$1213	\$966	\$809

MORE INFORMATION IS AVAILABLE
IN OUR RACER HANDBOOK



*Sales tax will be added to the total amount during checkout.

YACHT CLUBS & MORE

Corinthian Yacht Club

[Website](#)

[2025 Racebook; Sailing Instructions,](#)

[NOR, Race Dates, Rules, etc.](#)

[2025 Race Calendar](#)

[Race Archive](#)

[Youth Sailing Programs](#)

Sloop Tavern Yacht Club

[Website](#)

[STYC: Keelboat Racing Video 101 Video](#)
with Al Hughes & Sara Billey, Race Chairs
2021

[Race Marks](#)

[Results](#)

[Racing Rules of Sailing Reference](#)

[General Sailing Instructions](#)

[Notice of Race & Sailing Instructions \(Race Specific\)](#)

Seattle Yacht Club

[Website](#)

[Regatta Schedule](#)

[2025 Racebook](#)

[Junior Race Team](#)

[Youth Summer Sailing School](#)

Shilshole Bay Yacht Club

[Website](#)

[Racing](#)

[2025 Race Book](#)

[Race Marks](#)

Other Yacht Clubs / Races

[Pink Boat Regatta](#)

[CYC Edmonds - Foulweather Bluff](#)

[South Sound Sailing Society](#)

[Adventuress Cup \(previous year\)](#)



Volunteering at Sloop Tavern Yacht Club

The best way to meet people in the community and learn how to race is to volunteer on a committee boat, even if you really just want to sail. You see how starts work, and what's important before and afterward. You learn the right etiquette, and the timing. You watch other boats race and learn from them. You can ask questions during and after the race. And you meet people! To volunteer, see their [volunteer page](#).

RACER INTEREST FORMS

The Racer Interest Forms are used to provide information pertaining to your interests, availability, and experience level. Once submitted, the Club utilizes the information to form teams based on each racers preferences. To be considered for a team, forms must be submitted by the Form Deadline provided in the Racing Dates section.

»»» Spring/Summer Racer Interest Form

- Available: **January 28th**
- Ballard Cup, CYC Wednesday Nights
- Regattas: Blakely Rock Benefit, PSSR, Tri Island, 3 Buoy Fiasco, J/Fest, WATH 1 & 2, PBR, Adventuress, etc.
- Signature: Swiftsure, Race Week Bellingham

»»» Fall/Winter Racer Interest Form

- Available: **July 14th**
- Foul Weather Bluff, PSSC, Great Pumpkin, Grand Prix, Fall Regatta, Snowbird, Round the County
- STYC Iceberg
- South Sound Races (TBD)
- CYC Center Sound Series

